

VMS

User Manual

Preface

Users installing and operating the product is required to understand this manual and relative manuals fully before installation and operation.

All rights of the software and hardware described in the manual are protected by the patent law.



Note

This icon means “Note” explaining the procedure and additional information.



Caution

Caution

This icon means “Caution” explaining important information or limitations of the operation. .

CONTENTS

1. OVERVIEW	5
1.1 INTRODUCTION	5
1.2 FEATURE	6
2. INSTALLATION.....	6
2.1 SYSTEM REQUIREMENT	6
2.2 INSTALLATION GUIDE.....	7
3. SYSTEM LOGIN	7
3.1 SITE REGISTRATION	7
4. INITIAL INSTRUCTION	8
4.1 SITE REGISTRATION	8
4.1.1 REGISTRATION	9
4.2 USER MANAGER	12
4.2.1 USER GROUP REGISTRATION	12
4.2.2 USER REGISTRATION	13
5. MENU	15
5.1 VIEW.....	15
5.2 SYSTEM.....	16
5.2.1 LOG MANAGER	16
5.2.1.1 LOG VIEW	16
5.2.1.2 DATA SAVE	18
5.2.2 APP SETUP	19
5.2.2.1 CONFIGURATION	19
5.3 SETUP	21
5.3.1 EDIT PASSWORD.....	21
5.3.2 USER INFORMATION	22
5.3.3 ALARM MANAGER	23
6. LIVE VIEWER	25
6.1 LIVE VIEWER OVERVIEW	25
6.2 IMAGE VIEW	25
6.2.1 IMAGE VIEW BY CONNECTING SECURITY DEVICES	26

6.2.2	IMAGE VIEW BY CONNECTING CAMERAS.....	27
6.2.3	IMAGE VIEW THROUGH THE TRIPLE MONITOR	28
6.3	EVENT LIST.....	30
6.3.1	EVENT INFORMATION VIEW	30
6.4	STATUS LIST.....	30
6.4.1	SECURITY DEVICE STATUS INFORMATION VIEW.....	30
6.5	POPUP IMAGE.....	31
6.5.1	THUMBNAIL IMAGE VIEW IN POPUP IMAGE WINDOW	31
6.6	BASIC CONTROL.....	32
6.6.1	PTZ CONTROL	32
6.6.2	RELAY OUT CONTROL.....	33
6.6.3	TWO WAY AUDIO CONTROL	34
6.6.4	COLOR ADJUSTMENT.....	34
6.6.5	SCREEN SEQUENCE FUNCTION	35
6.6.6	OTHER FUNCTIONS.....	35
6.7	CALLBACK FUNCTION.....	36
6.7.1	SETTING AND OPERATION.....	36
7.	PLAYBACK.....	38
7.1	PLAYBACK OVERVIEW	38
7.1.1	PLAYBACK OF THE RECORDED IMAGE	38
7.2	SEARCH.....	39
7.2.1	TIME LINE SEARCH	39
7.2.2	POS SEARCH.....	39
7.3	PLAYBACK	40
7.3.1	PLAYBACK OVERVIEW	40
7.3.2	TIME LINE	41
7.3.3	PLAYBACK CONTROL.....	41
7.3.4	CONTROL	42
7.4	DOWNLOAD.....	42
7.4.1	DOWNLOAD OF THE RECORDED DATA	42
8.	BACKUP PLAYER.....	43
8.1	BACKUP PLAYER OVERVIEW	43
8.1.1	PLAYBACK OF THE RECORDED DATA	43
8.1.2	TIME LINE	44
8.1.3	PLAYBACK CONTROL.....	44
8.1.4	CONTROL	45

8.2	SMART SEARCH.....	46
8.2.1	SMART SEARCH.....	46
8.3	WATER MARK SEARCH.....	47
8.3.1	WATER MARK SEARCH.....	47
9.	VIDEO ENCODER.....	47
9.1	VIDEO ENCODER OVERVIEW	47
9.2	VIDEO ENCODER START/ OPERATION	47
10.	HEALTH MANAGER.....	50
10.1	HEALTH MANAGER OVERVIEW.....	50
10.2	HEALTH MANAGER START/ OPERATION.....	50
11.	REMOTE UPGRADER.....	51
11.1	REMOTE UPGRADER OVERVIEW	51
11.2	REMOTE UPGRADER START/OPERATION	51
12.	DVR SETUP MANAGER.....	52
12.1	DVR SETUP MANAGER OVERVIEW.....	52
12.2	DVR SETUP MANAGER START	52
12.3	SETUP DATA OPEN &SAVE.....	53
12.4	SETUP DATA RESET AND DVR ALL RESET	53

1. Overview

1.1 Introduction

This program is Central Management System that is designed to control various security

devices (IP camera, DVR, NVR, Video Sever) connected from a single PC by networking. This program consists of the multi-functions including the live image monitoring, real-time event management, security device status monitoring, and then image search, playback, download, smart search and watermark etc.

1.2 Feature

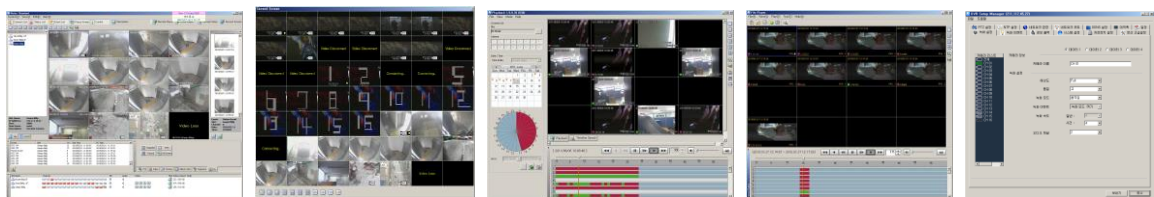
In the program, users can register security devices and it provides a real-time multi monitoring. Users can control a function window size as each function has a separate window.

This program manages the user account and group. It provides a separate management of the user account by allowing the administrator to set the authority of detail features for the group.

This program manages and saves events that were sent from many security devices. This program reports users an alarm set with events through the pop-up message, audio and real-time image etc.

In the network player, users can search the recorded file and play and download the image and audio. A searching term by second is available and the preview screen enables users to search images without playing actual images.

The recorded file with images and audios in PC can be played by File Player and it provides a faster search of information by the smart search and water mark.



2. Installation

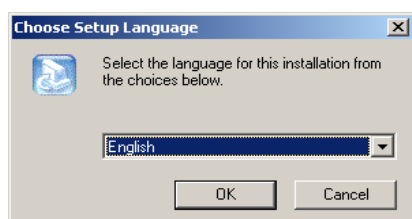
2.1 System Requirement

In order for proper operation of the program, it requires PC more than the min. specification. With the min. specification, it only provides min. functions. For full operation of the program, PC is required to be equipped with more than the recommended specification.

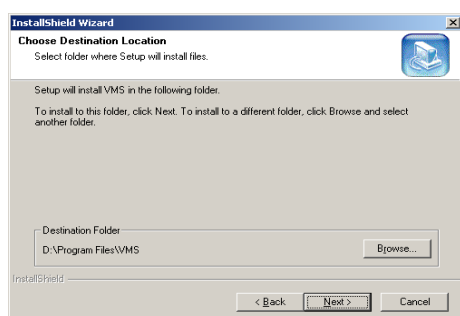
System	Min. Specification	Recommend Specification
CPU	Intel Core2Duo 2.0GHz	Intel Core2Quad 2.66GHz
Main Memory	2GB	4GB or higher
Video Card Memory	128MB	512MB or higher
Display Resolution	1024 * 768 (With 32bit color) or higher	
HDD	80GB or higher	
OS	Windows XP SP2 or higher	
Others	Direct X 9.0 or higher	

2.2 Installation Guide

1. Insert software CD into the CD drive of PC.
2. Click on Setup.exe. An install program will be executed and a language selection page will shows up.



3. Select a desired language.
4. Designate a folder in which the program is installed and click on “Next”, and then installation starts.



3. System Login

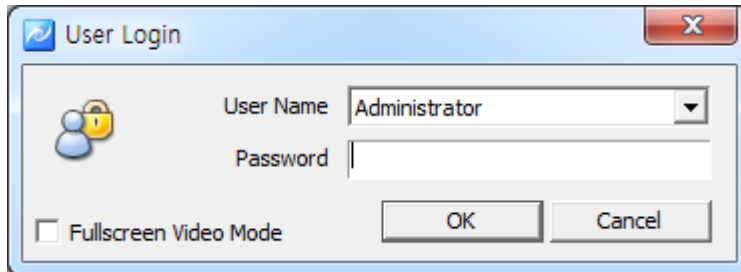
System Login is to decide a program execution/block by confirming the user name and password.

3.1 Site Registration

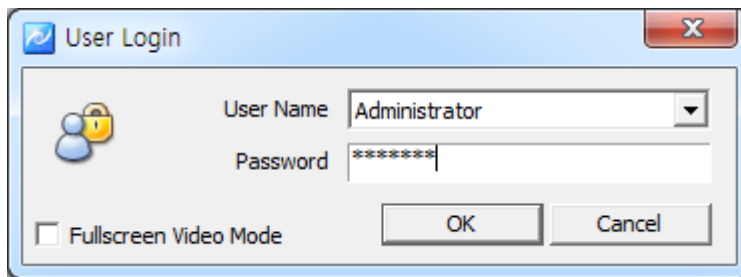
1. In the program start menu, go to VMS and select VMS icon or double-click on Vin

the wallpaper, and then the login window pops up.

2. Select one of the names of registered users in the login window. For the first time login, select Administrator. Administrator is registered as a fundamental user.



3. Enter a password. For the first time login, enter an administrator password. The administrator password “1111111”. After login, change the administrator password.



4. The program starts if the password is right.



Note

- To change the password, go to ‘Setup’->‘Password Change’ menu. (For more information, refer to ‘5.2.9 Password Change’.
- In VMS, multi-user registration is available, all users can log in one PC with separate user information. Each user can configure a preferred program environment, and then the program starts according to each user’s setting after login.
- Information of the latest window environment will be saved when the program is closed.

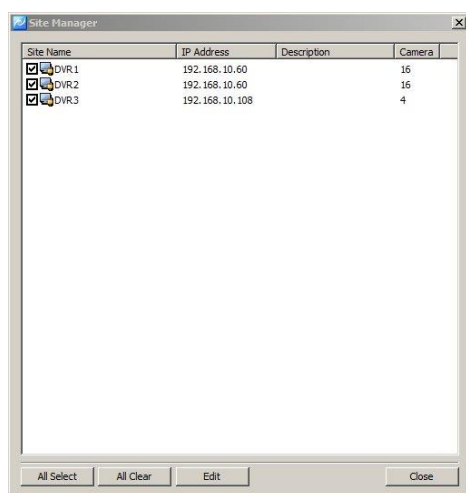
4. Initial Instruction

4.1 Site Registration

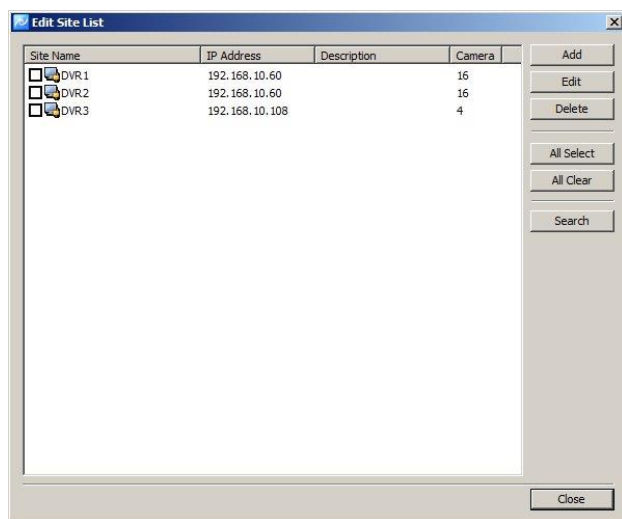
Security devices need to be registered after login. With registered security devices, users can use functions including real-time monitoring, search and playback, backup and event alarm.

4.1.1 Registration

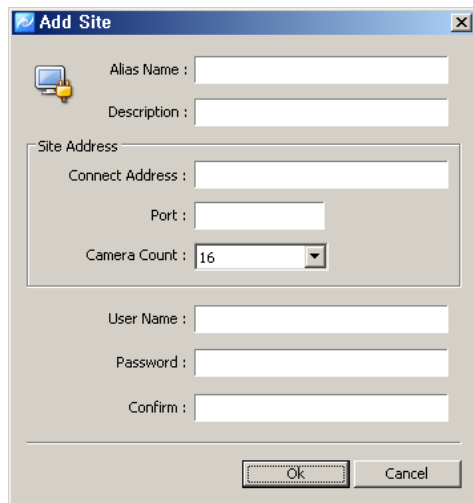
1. Select 'Setup'-'>'Site Manager' menu. Site Manager Setup window shows up.
2. In Site Manager, functions including, all select, all clear and modify are available. Selected sites will be listed on the Connect list from the main system window.



3. Select 'Edit' menu. "Edit site list" window shows up.
Users can modify the sites and search&add the security device in the local network



4. In "Add", users can register the security device.



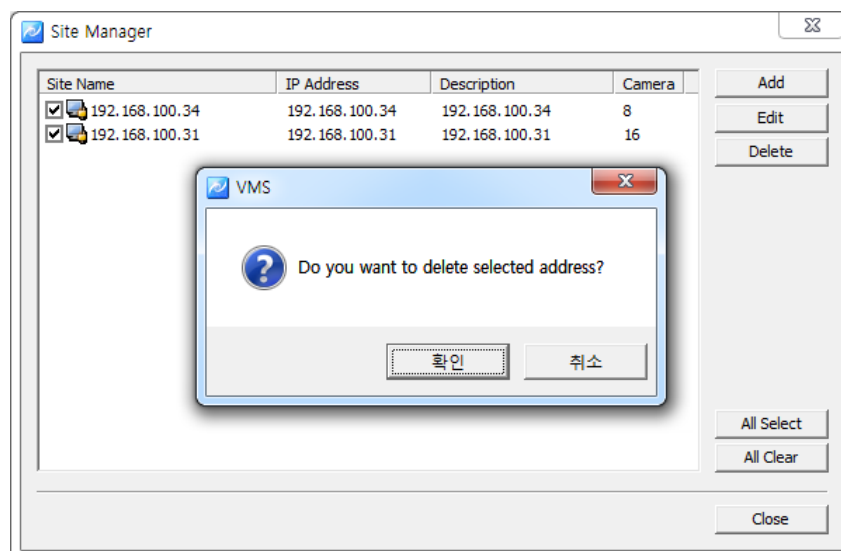
The 'Add Site' dialog box contains the following fields:

- Alias Name :
- Description :
- Site Address section:
 - Connect Address :
 - Port :
 - Camera Count :
- User Name :
- Password :
- Confirm :

Buttons: Ok, Cancel

Item	Description
Name	Name of the security device to be used in the program
Description	Description of the security device
Connect Address	Network address of the security device
Port	Network port no. of the security device
Camera Count	The number of cameras connected to the security device
User Name	User name registered in the security device
Password	Password registered in the security device

5. In 'Modify' users can modify the security device name, connect address and port.
6. In 'Delete', users can delete selected sites.



The 'Site Manager' window displays a table of sites:

Site Name	IP Address	Description	Camera
<input checked="" type="checkbox"/> 192.168.100.34	192.168.100.34	192.168.100.34	8
<input checked="" type="checkbox"/> 192.168.100.31	192.168.100.31	192.168.100.31	16

Buttons on the right: Add, Edit, Delete, All Select, All Clear, Close.

A 'VMS' dialog box is overlaid with the message: "Do you want to delete selected address?". Buttons: 확인 (Yes), 취소 (No).

7. In 'Search', system will search the security device name, and IP address and port.
Users can add the device information by selecting the list.

Add Site

Alias Name: 192.168.10.64
Description: 192.168.10.64

Site Address:
IP Address: 192.168.10.64
Port: 50100
Camera Count: 4

User Name:
Password:
Confirm:

Search Search Done. OK Cancel

IP Address	Port	MAC Address	Ch...
192.168.10.64	50100	00:0C:28:FF:FF:00	4
192.168.10.68	50100	00:0C:28:05:6A:F4	4
192.168.10.63	50100	00:0C:28:FF:FE:FE	4
192.168.10.66	50100	00:0C:28:06:A7:9D	4
192.168.10.58	50100	00:0C:28:06:FB:25	4
192.168.10.78	50100	00:0C:28:07:12:7C	8
192.168.10.60	3000	00:0C:28:06:9C:AC	4
192.168.10.61	50100	00:0C:28:06:D0:E4	16
192.168.10.20	50100	00:0C:28:06:F0:E5	16



- Note**
- VMS automatically starts a connection to ticked addresses in Site Manager after login.
 - A connection doesn't happen for un-ticked security devices.
 - There is no limit for registering sites in VMS.

4.2 User Manager

User Manager is to register and manage ID of the program users. It decides the program to be executed or blocked by confirming ID and password and also gives different authority to each user group for all functions in the program.

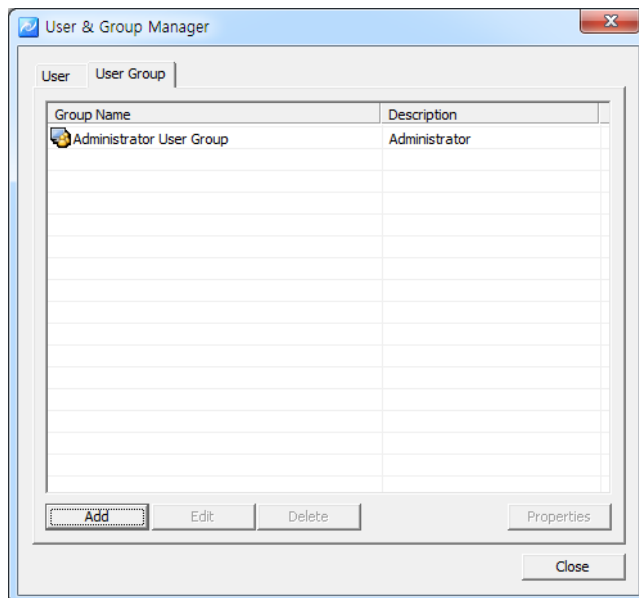
Administrator as a fundamental user is registered in the administrator group. The administrator group has authority for all functions in the program. For the first time login, use initial administrator ID.



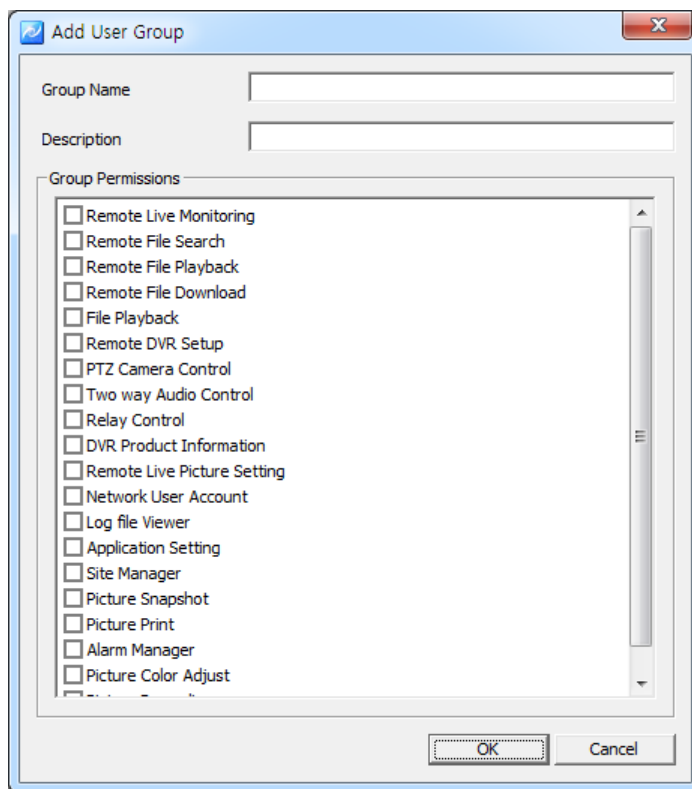
Note ■ The number of users to be registered is unlimited.

4.2.1 User Group Registration

1. Select 'System'-'>'User Manager' menu. "User & Group Manager" window shows up.
2. Select User Group tab.



3. Click on 'Add' at the bottom of the group list.
4. Enter a group name and tick on desired functions from the group permission list.



5. Click on 'Ok' and selected functions are granted to the user group. The user group name will be shown at the user group list.



Note

■ In order to register a user group, users must log in with one of ID from the administrator group. For the first time login, use the initial registered administrator.

4.2.2 User Registration

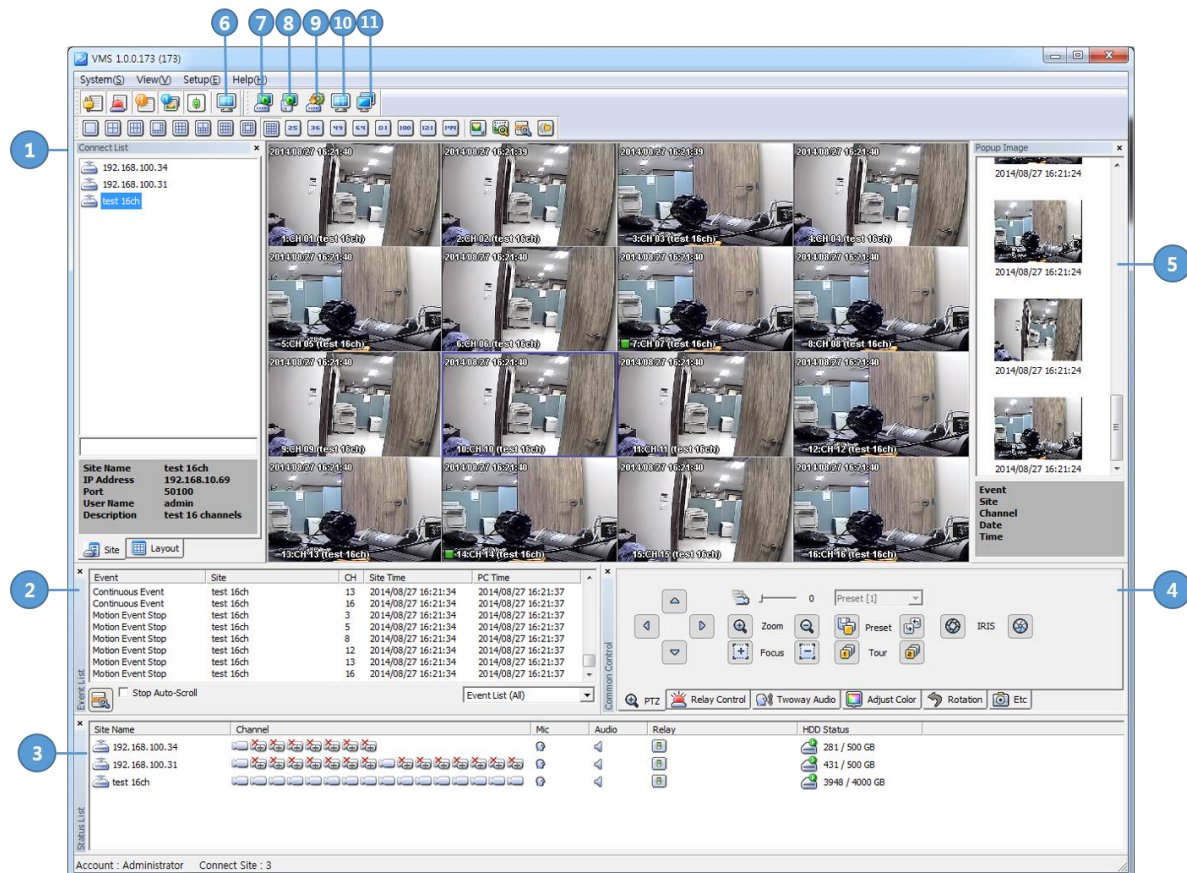
1. Select 'System'-'>'User Manager' menu. User & Group Manager setup window shows up.
2. Select User tab.

5. Menu

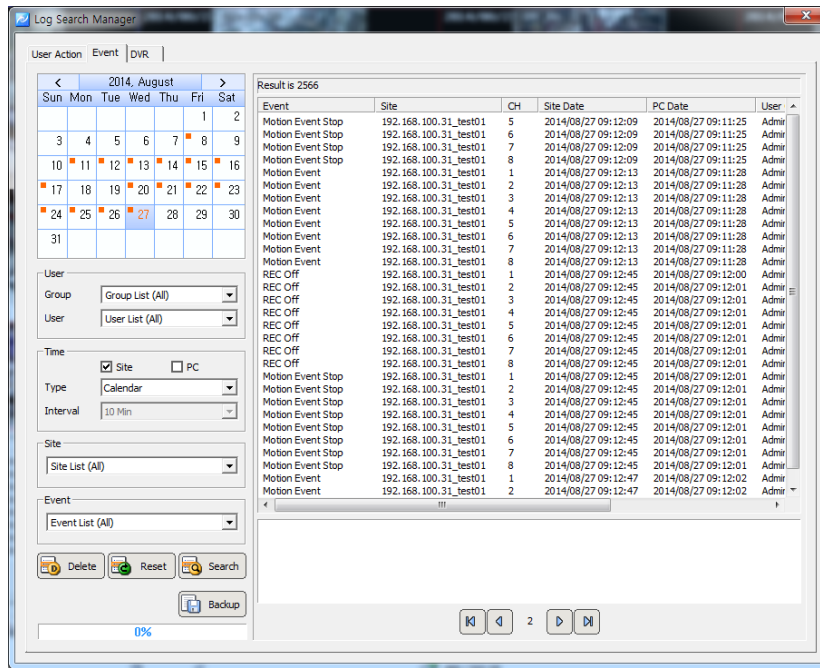
5.1 View

View menu is used to configure a collection of the panel window.

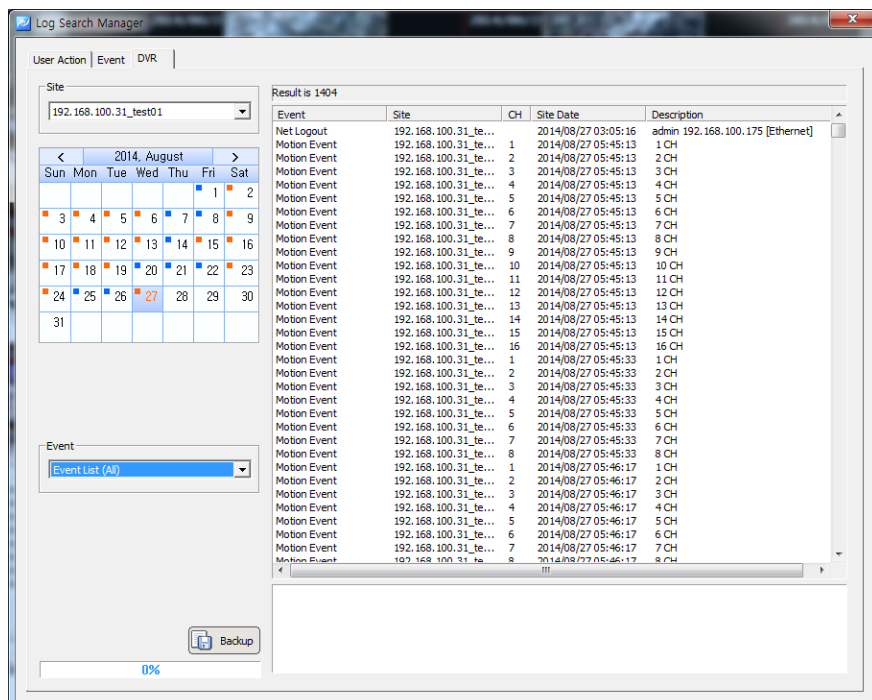
No.	Menu	Icon	Function
①	Site Connection List		Site Connection List Panel View
②	Event List		Event List Panel View
③	Site Status List		Site Status List Panel View
④	Basic Control Function		Basic Control Panel View
⑤	Pop up Image List		Pop up Image List Panel View
⑥	Multi. screen		Multi. Screen Panel View
⑦	Network Player		Network Player Execution
⑧	Backup Player		Backup Execution
⑨	Device Setup Manager		Device Setup Manager Execution
⑩	Heath Manager		Health Manager Execution
⑪	Program Information		Program Information View



- For the event log and alarm log of security devices, select 'Event' tab. Dates saved with logs will be shown in the calendar. Select a desired date and log information of events and alarms will be shown. Searching by user, security device/PC time, site and event are available.

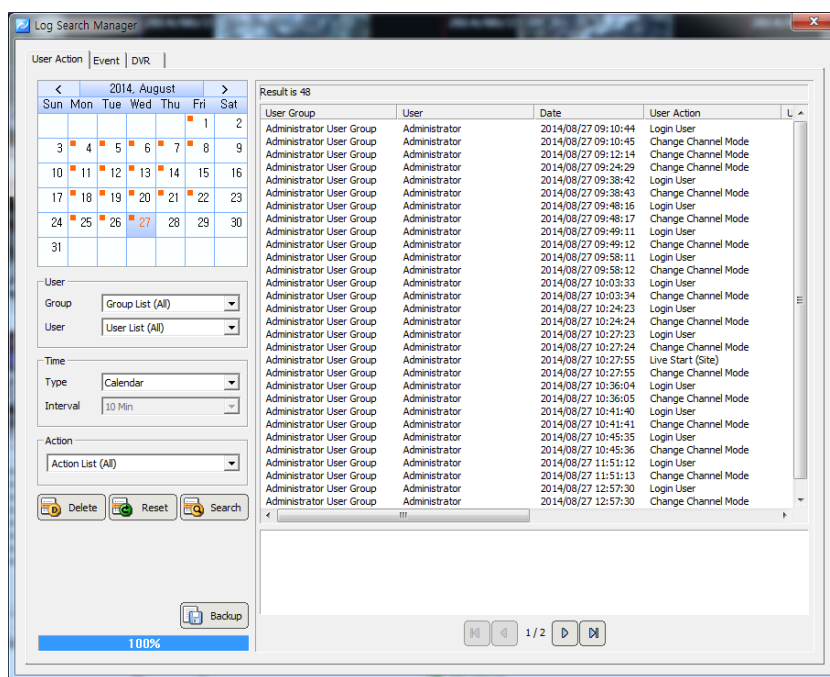


- For the security device log, select 'DVR Log' tab. Dates saved with the log history will be shown in the calendar. Select a desired date and the log information of the security devices will be shown.



5.2.1.2 Data Save

1. For program log, event and log data back, select the backup button. After set of the save path, the search results will be saved by csv format.
(csv file can be opened at Micron soft Excel)



Note

- The time used in 'User Action' log is based on PC time. The time used in 'Event' and 'DVR Log' is based on the time of the security device.

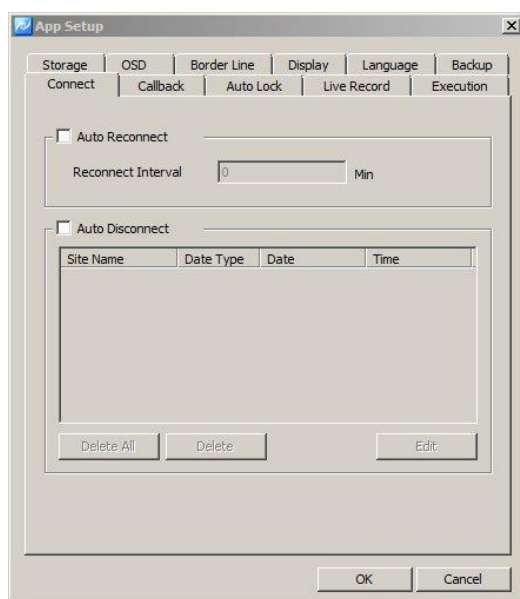
5.2.2 App Setup

The program environment setting is available.

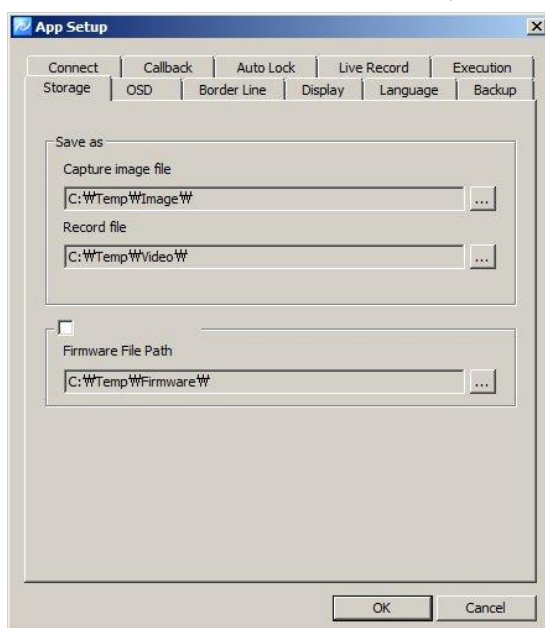
OSD, Language, Backup, Auto Lock, Connect, Disconnect, Callback can be set.

5.2.2.1 Configuration

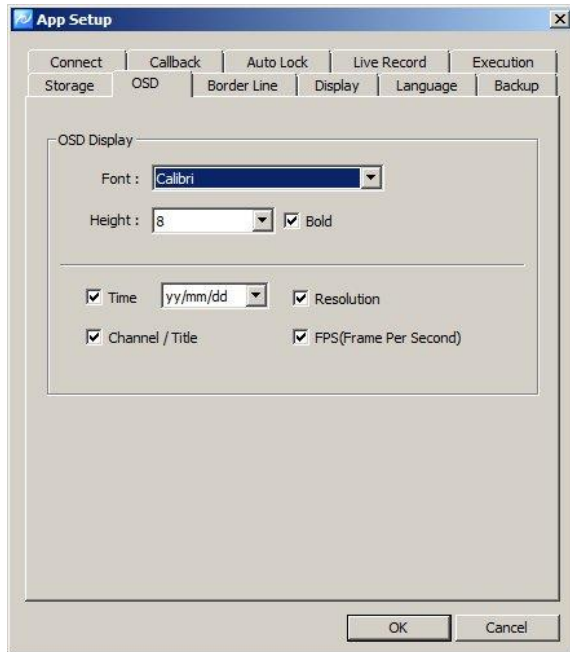
1. In 'Connect', users can configure the auto reconnection trial interval when the device was disconnected.



2. In 'Storage' tab, users can designate saving folders for the capture image file, record file and DVR firmware file,



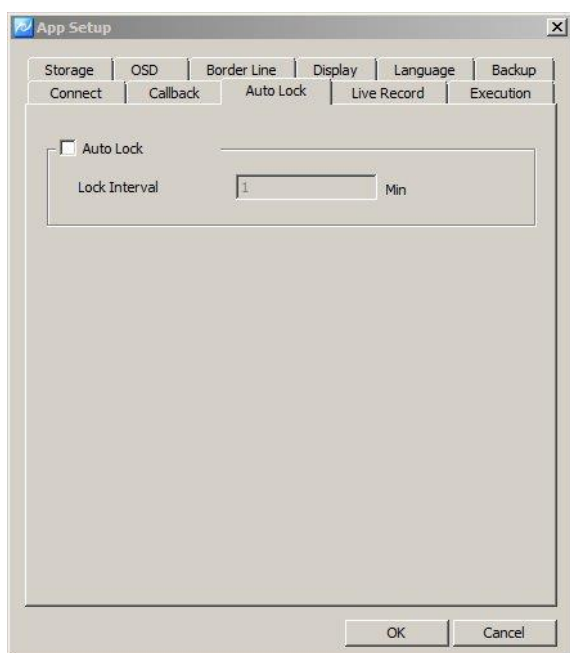
3. In 'OSD' tab, users can configure the name, height, thickness and color of the font to be displayed above the live monitoring screen. Also it sets up Enable/Disable of the time, resolution, title and other information to be displayed above the screen.



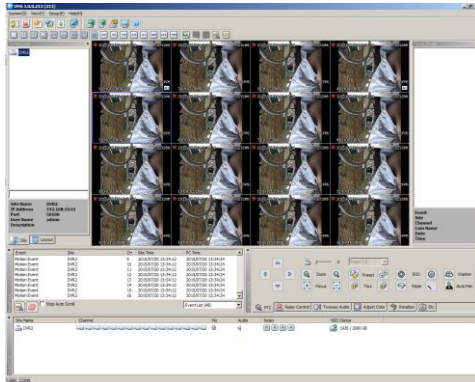
4. In 'Border Line' tab, users can configure the thickness and color of the border line that indicates the border line between channels in real-time monitoring.

5. In 'Auto lock' tab, users can configure the auto lock interval of VMS program.

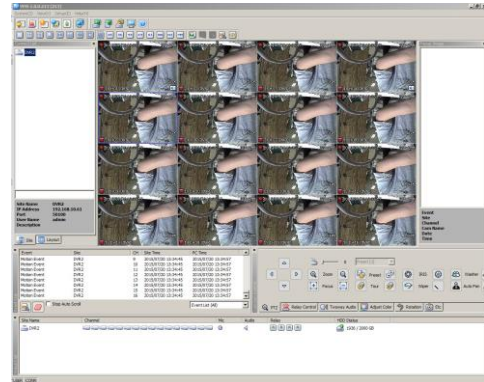
VMS program go to the background process after the auto lock interval. User can recall the program by selecting the VMS from the system ray icons.



6. In 'Live record' tab, users can select the record the live monitoring images or the record the images when the events are occurred.
7. In 'Display' tab, users can change the pixel size and setup the video filter. Also a size, font and color of letters; 'Connecting', 'Signal Loss' and 'Video Disconnect' can be decided. In, Screen Ration, users can configure the live image, display ration which is



[Screen Real ratio is on]



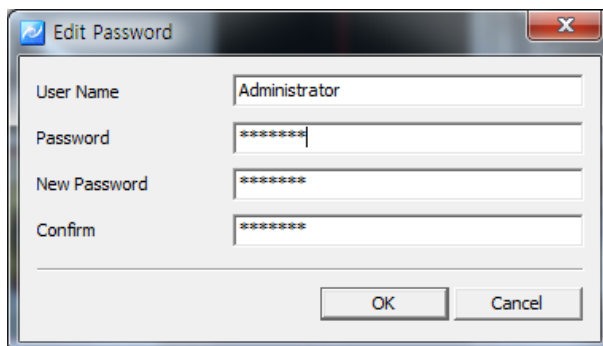
[Screen real ratio is off]

8. In 'Playback' tab, users can setup the vertical playback mode and last image display mode.
9. In 'Language' tab, users can select languages including English, Korean, Japanese, Turkish, Italian, Polish, Chinese, French.

5.3 Setup

5.3.1 Edit Password

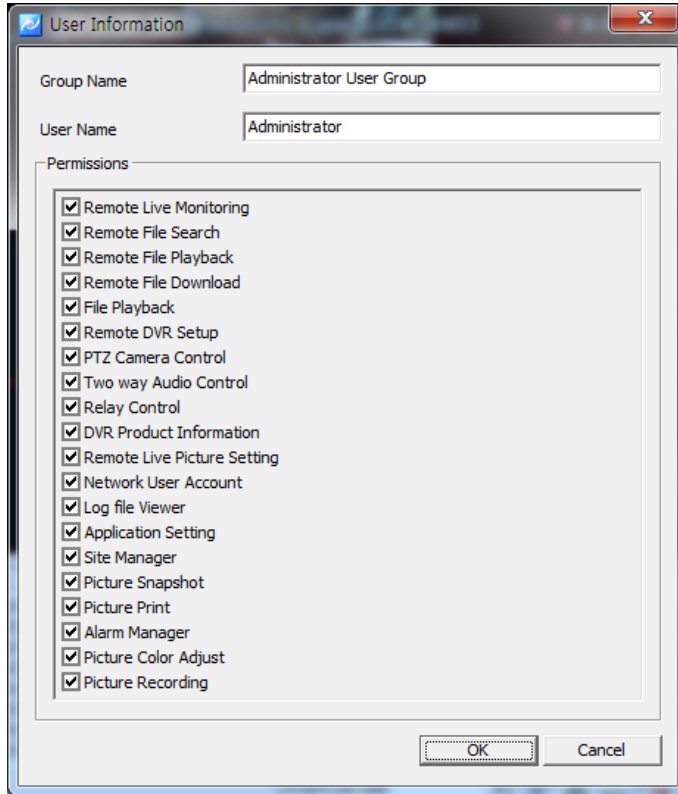
1. Select 'Setup'-'>'Edit Password' menu. Edit Password setup window shows up.



2. Users can change the password of current logged-in user ID.

5.3.2 User Information

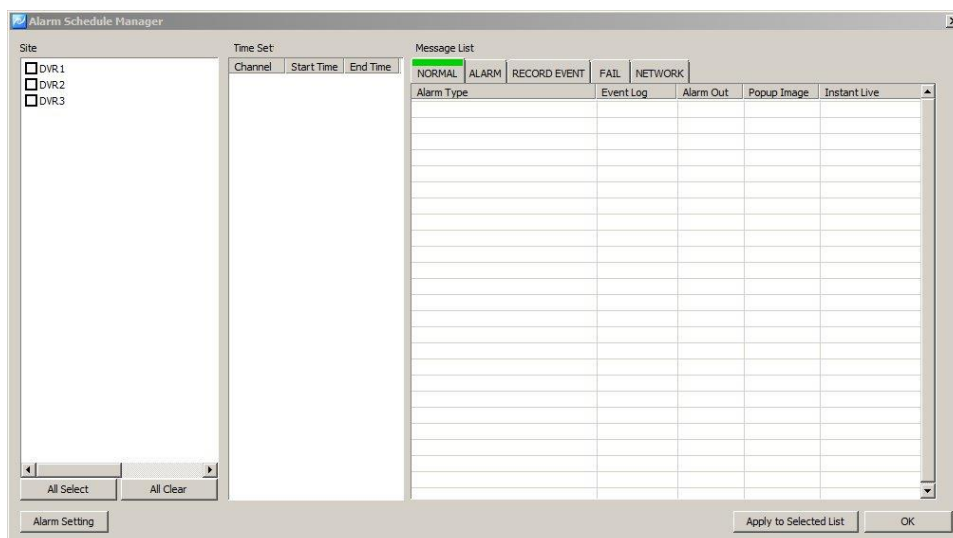
1. Select 'Setup'-'>'User Information' menu. User Information setup window shows up.



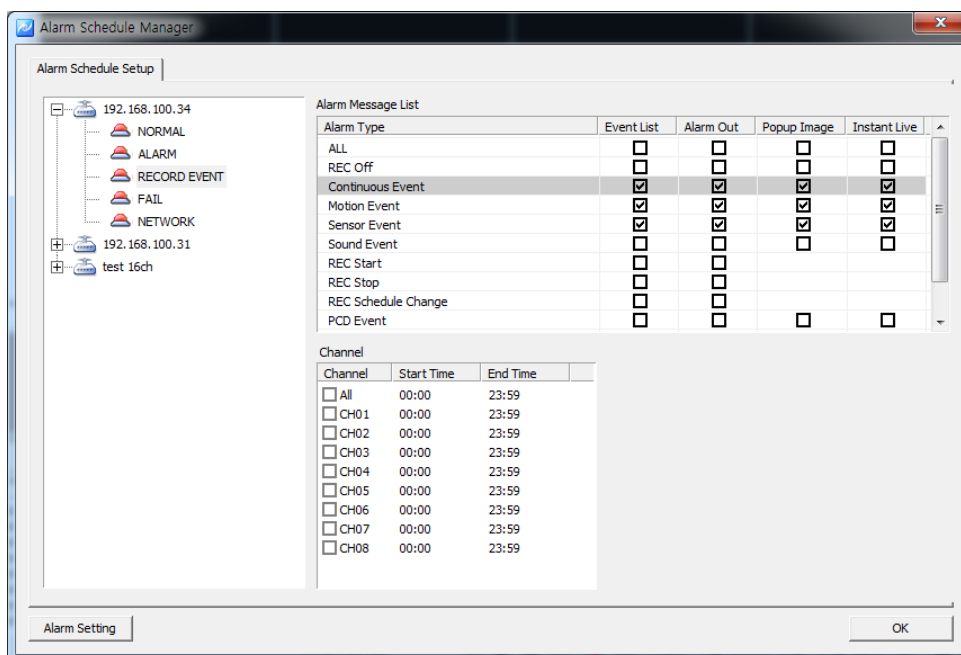
2. The name, group and group authority of the current logged-in user are displayed.

5.3.3 Alarm Manager

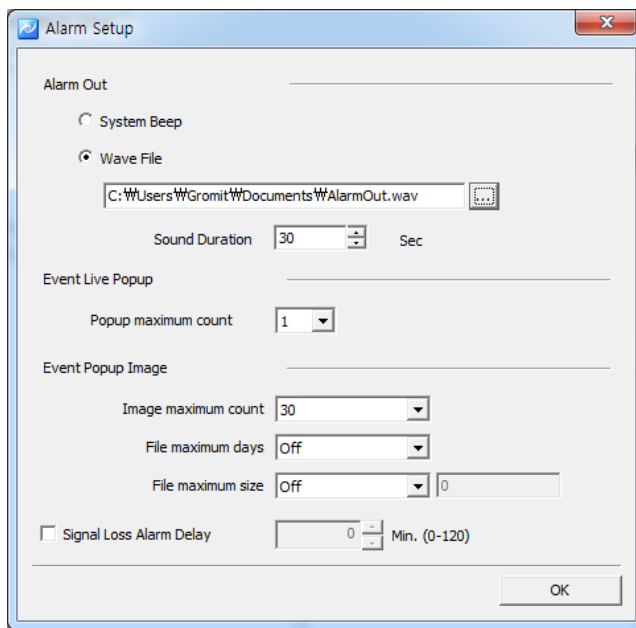
1. 'Setup'-'>'Alarm Manager'. Alarm Schedule Manager setting window will be appeared.



2. The Alarm type(Alarm Out, Instant Live, Popup Image) can be selected at DVR List.



3. At Alarm Manager, by pressing 'Alarm Setting' each Alarm setting (options) will be available.



- Alarm Out
 - Sound setting at Alarm. System Beep/Wave File
- Instant Live (Event Live Popup)
 - Instant Live popup images numbers setting available.
- Event Popup Image
 - Popup image max save number, the date of image files creation, image file size.
- Signal Loss Alarm Delay
 - Latency time after camera signal loss.

6. Live Viewer

6.1 Live Viewer Overview

The “Live viewer” is a multi-channel real-time program displaying a customized screen of multi-channel real-time monitoring images.

The viewer is a main function of the program and incorporates all program menus. It consists of various panels including Site Connection List, Screen Layout List, Event List, Basic Control Function and Status List Popup Image.

Users can check real-time events, status and connection information of the security device connected in Site Connection List, Event List and Status List. In Screen Layout List, users can customize channels and modes for real-time monitoring. In Popup Image, an image of the important event moment is captured and saved in an image format. In Basic Control Function, it provides PTZ, Relay, Two way Audio, Color Adjustment, Sequence and other functions.

6.2 Image View

In Viewer, there are three ways to have the real-time monitoring image. The first way is to drag a security device icon into the screen and all channels of the security device are displayed. The second way is to drag cameras from the security device list to desired locations of the screen and the selected camera will be displayed at the selected location. The third way is to collect cameras of the security devices in Screen Layout Function.

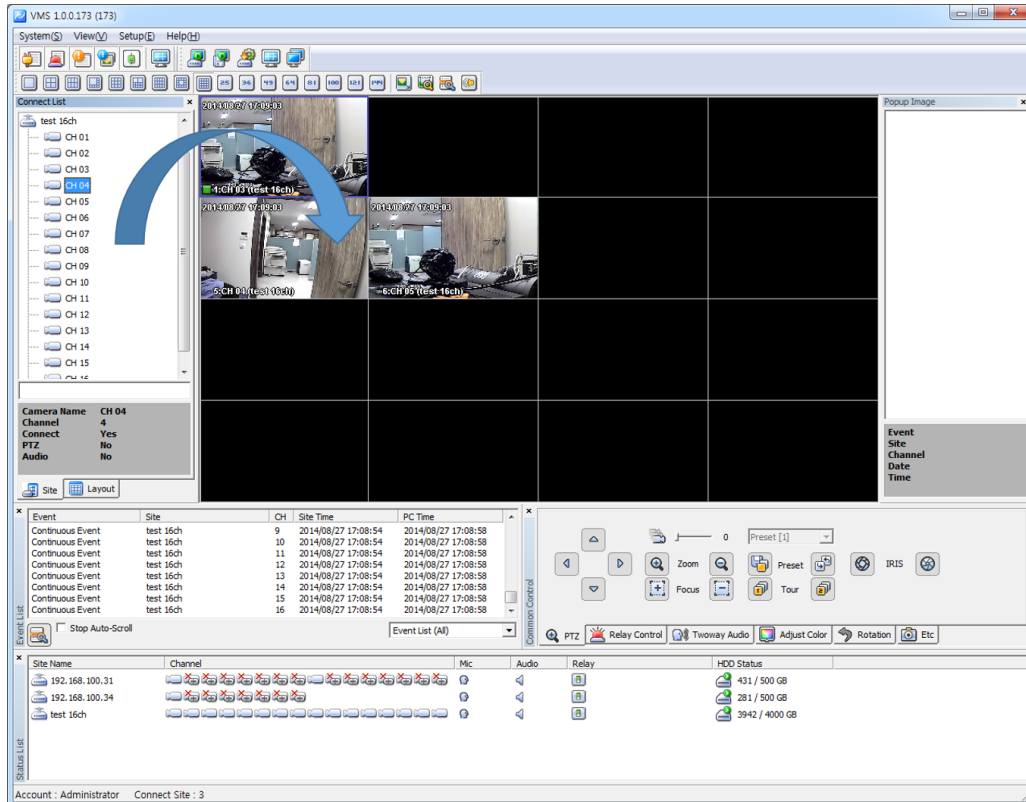


Note

- The channel mode automatically changes according to the number of added cameras when the user drag/drop icons.
 - Images being displayed in the viewer move to other locations by dragging images.
 - images exchange each other if a image is dragged onto an occupied location.
-

6.2.1 Image View by connecting security devices

1. In Site Connection List, select a desired security device icon to be monitored.
2. Drag the icon into the viewer screen, and then all channel of the security device are displayed.



Note

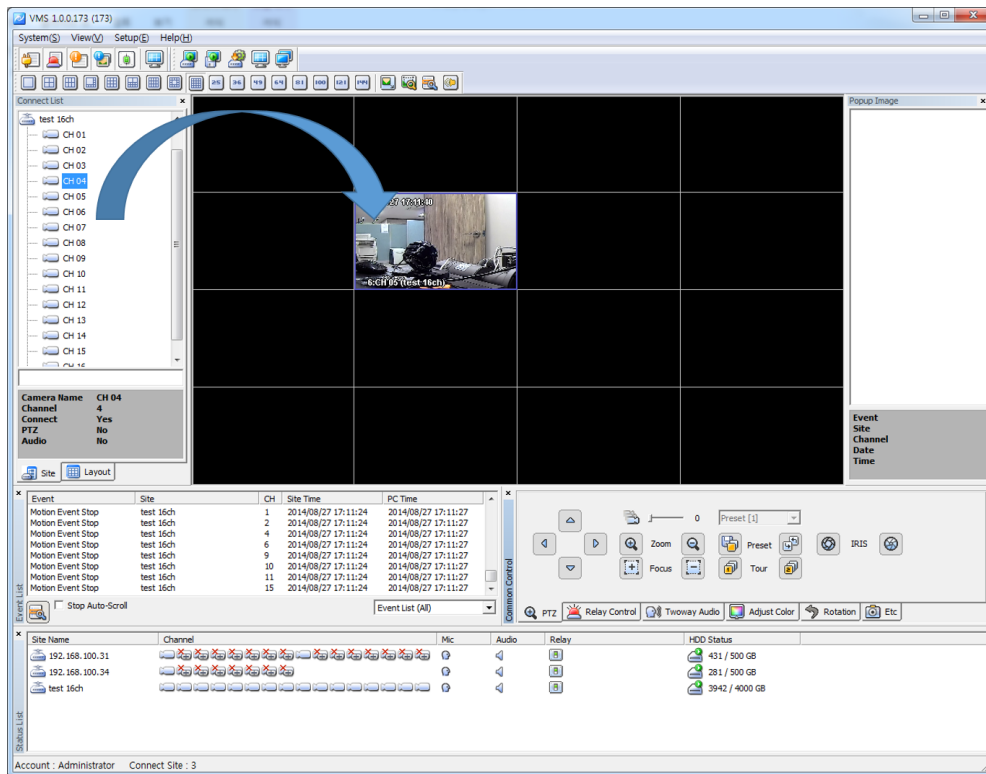
- To disconnect the security device, right-click on a desired icon, and then select 'Disconnect' in the popup menu.
- The channel mode automatically changes according to the number of channels.
- The max. number of channels to be displayed in the viewer are 64.

6.2.2 Image View by connecting cameras

1. In Site Connection List, double-click on a connected security device icon to enlist it to be real-time monitored. Select camera icons from the camera list of the security device.
2. Setup a layout by selecting a channel mode in Channel Mode.




3. Drag camera icons onto the viewer screen, and then real-time monitoring images are displayed

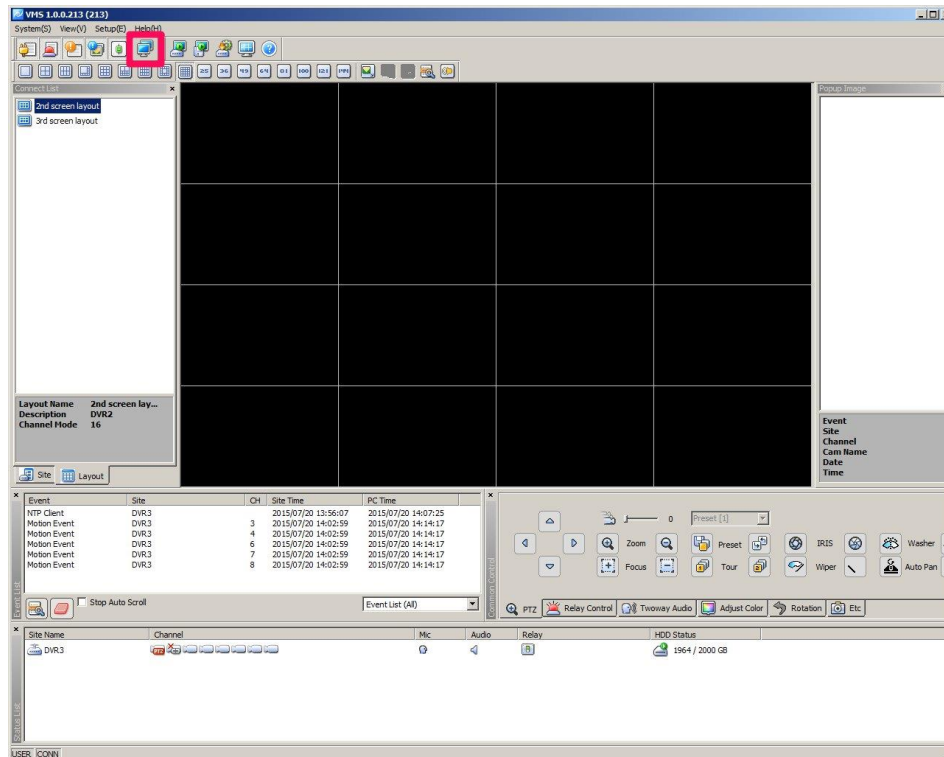


Note

- To disconnect the camera, drag a desire monitoring image out of the viewer screen.
- Users can setup the layout by 1, 4, 6, 8, 9, 10, 13, 16, 25, 36, 49, 64 channel mode.

6.2.3 Image View through the triple monitor


1. In View menu, select the second screen or click on  button in Tool Bar. The second monitor screen shows up.



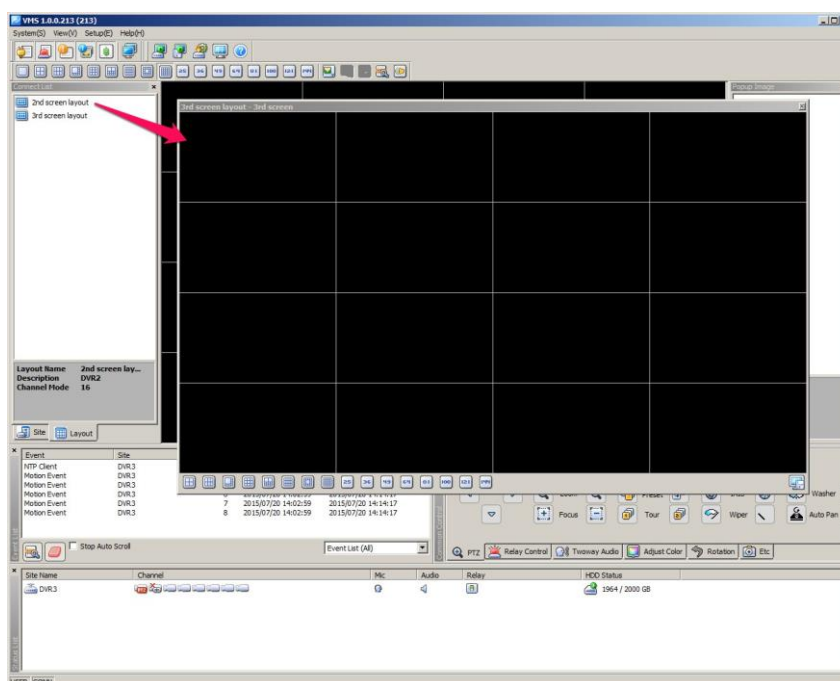
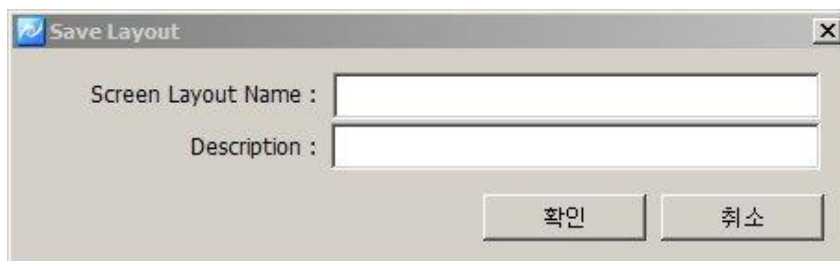
2. Move the second screen to the second monitor
3. Setup the layout by selecting a channel mode in Channel Mode.



4. Repeat 6.2.1 or 6.2.2 to bring images on the second screen and third screen.

5. Select the  icon to save the each layout name and description.

Saved layout will be shown on the layout list from connect list panel.




Note ■ To disconnect the camera, drag a desire monitoring image out of the second viewer screen.

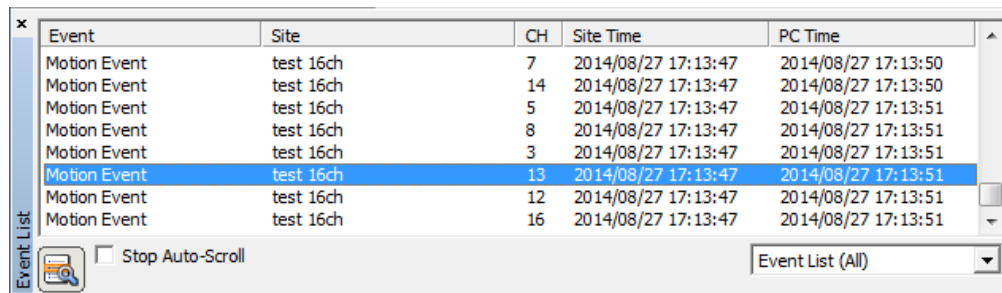


Caution ■ To use more than two monitors, the video card in PC must support the dual-monitor or more.

6.3 Event List

6.3.1 Event Information View

1. In View menu, select an event list or click on  button in Tool Bar. The event list window pops up.
2. Events occurred in connected security devices automatically are indicated in the event list.(No setup needed)




Event	Site	CH	Site Time	PC Time
Motion Event	test 16ch	7	2014/08/27 17:13:47	2014/08/27 17:13:50
Motion Event	test 16ch	14	2014/08/27 17:13:47	2014/08/27 17:13:50
Motion Event	test 16ch	5	2014/08/27 17:13:47	2014/08/27 17:13:51
Motion Event	test 16ch	8	2014/08/27 17:13:47	2014/08/27 17:13:51
Motion Event	test 16ch	3	2014/08/27 17:13:47	2014/08/27 17:13:51
Motion Event	test 16ch	13	2014/08/27 17:13:47	2014/08/27 17:13:51
Motion Event	test 16ch	12	2014/08/27 17:13:47	2014/08/27 17:13:51
Motion Event	test 16ch	16	2014/08/27 17:13:47	2014/08/27 17:13:51

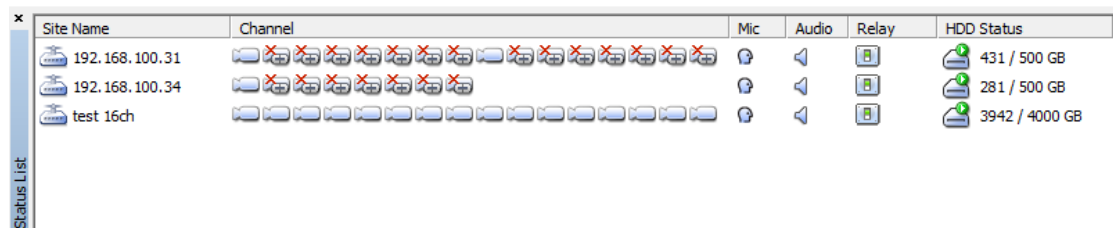


Note ■ The event list window is a docking window so that users can place the icon at a desired location and have a separate window.

6.4 Status List

6.4.1 Security Device Status Information View

1. In View menu, select a status list or click on  button in Tool Bar. The status list shows up.
2. The status list shows status of the connected camera including PTZ Connection, Video Disconnect, Signal Loss and HDD status, and also indicates Two way Audio enable/disable, Relay enable/disable and HDD occupied/total capacity.



Site Name	Channel	Mic	Audio	Relay	HDD Status
192.168.100.31	[Icons]	[Icon]	[Icon]	[Icon]	431 / 500 GB
192.168.100.34	[Icons]	[Icon]	[Icon]	[Icon]	281 / 500 GB
test 16ch	[Icons]	[Icon]	[Icon]	[Icon]	3942 / 4000 GB



Note ■ The status list window is a docking window so that users can place the icon at a desired location and have a separate window .

6.5 Popup Image


Popup Image is a sub window showing a thumbnail transmitted from the security device when an event occurs. Setup in 'App Setup'.

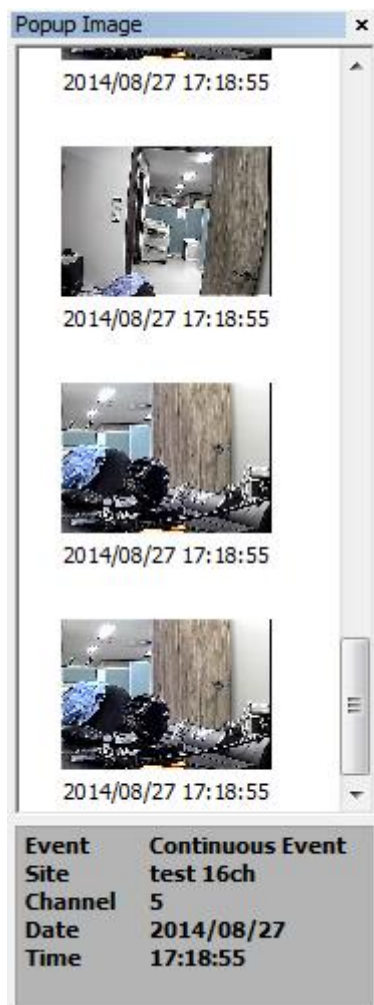


Note

- To bring thumbnail in case of the event occurrence, tick on 'Event Popup Image' in 'Instant Live' tab at 'App Setup'. (For more information, refer to '5.2.3' App Setup.)
-

6.5.1 Thumbnail Image View in Popup Image Window

1. In View menu, select a popup image or click on  button in Tool Bar. The popup image window shows up.
2. The thumbnail image automatically shows if an event occurs from connected security devices. (Setup needed in App Setup)

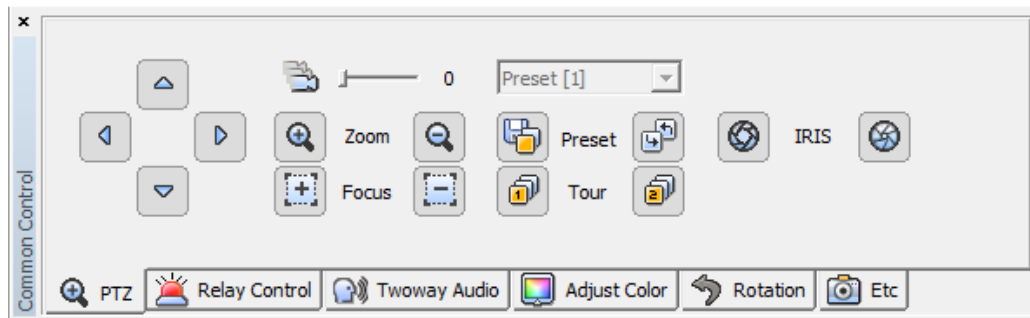


6.6 Basic Control

Basic Control consists of PTZ control, Relay control, Two way Audio, Color adjustment, Screen sequence and other functions.

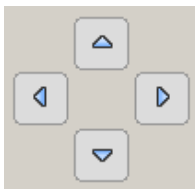
6.6.1 PTZ Control

PTZ Control is to control the PTZ camera with functions including Move, Zoom In/Out, Focus Adjustment, Preset, Speed Adjustment and Tour 1/2.





PTZ Movement Control



1. Select a PTZ camera to be moved.
2. Move the PTZ camera by pressing four direction keys.



PTZ Focus Control



1. Select a PTZ camera to be focus-controlled.
2. Press   button to adjust the focus.

PTZ Zoom Control


1. Select a PTZ camera to be zoom-controlled.
2. Press   button to zoom in/out.

PTZ Preset Control



1. Select a PTZ camera to be preset-controlled.

2. Select a preset number and press  button. The camera moves to a preset position.
3. To designate a certain position as a preset position, move the camera to a desired position and select a preset number, and then press  button. The position is saved as the preset position.

PTZ Speed Control

1. Select a PTZ camera to be speed-controlled.
2. Adjust the speed by moving the sliding bar . The speed of the PTZ camera gets faster or slower.




PTZ Tour Control

1. Select a PTZ camera to be tour-controlled.
2. Press  button and the PTZ camera moves according to the tour no.1. Press  button and the PTZ camera moves according to the tour no.2.

6.6.2 Relay Out Control

Relay Out Control is to setup the relay On/Off that is connected to the security device. The number of Relay Out varies depending on security devices.



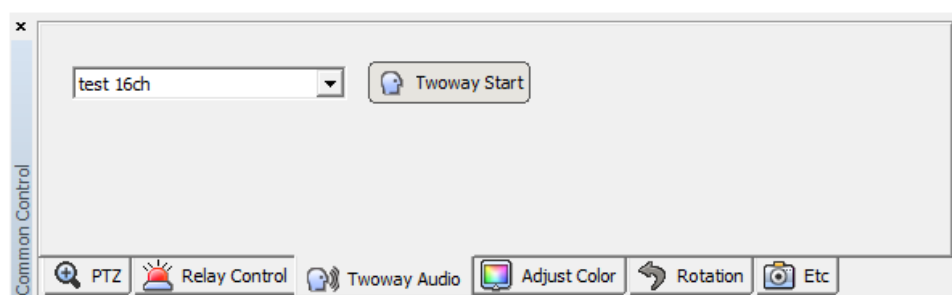
1. Select a site to be relay out-controlled from the list.
2. Press  button and request a relay out-control to the security device.
3. Status of the relay out is shown by  (Off)  (On) buttons.
4. The button is designed to be toggled. (On->Off, Off->On)




Note ■ The time out of the relay out is 5 seconds. After 5 seconds, the user has to request it again.

6.6.3 Two way Audio Control

Two way Audio Control is to send an audio sound from the program to a speaker of the security device.



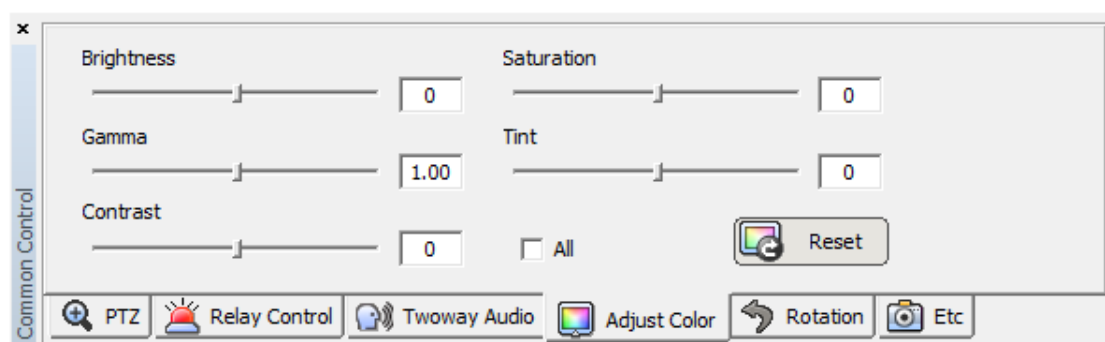
1. Select a site to be two way audio-controlled from the list.
2. Press  button and speak to a mike connected to PC.
3. A voice comes out of the speaker connected to the security device.



Note ■ The time out of the two way audio is 120 seconds. After 120 seconds, the user has to request it again.

6.6.4 Color Adjustment

It is to adjust color of the real-time monitoring image in the “Live viewer” panel.



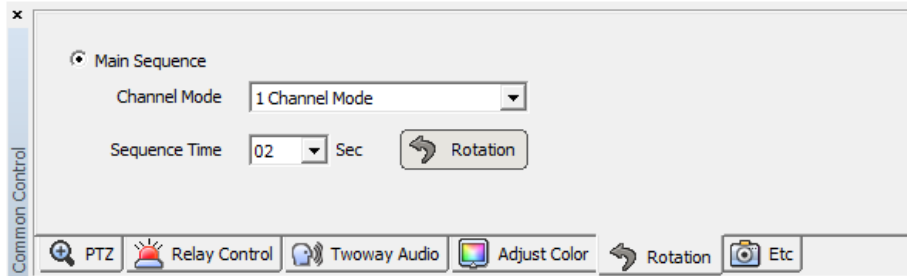
1. Select a screen to be color-adjusted.
2. Adjust the value of Brightness, Gamma, Contrast, Saturation and Tint.
3. All channels can be adjusted with the same value by ticking on ‘All Channel’.




Note ■ The color adjustment value returns to the default value when program terminates.

6.6.5 Screen Sequence Function

Screen Sequence Function is to rotate the layout of the real-time monitoring image in the viewer screen according to a desired time interval.




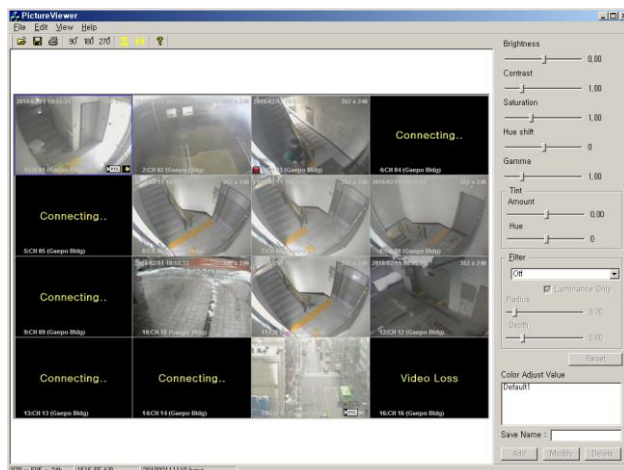
1. Select a channel mode. (1, 4, 9, 16 channel mode)
2. Select a rotation time interval. (2seconds ~ 60seconds)
3. Press  button and it starts the rotation according to the set value.




6.6.6 Other Functions

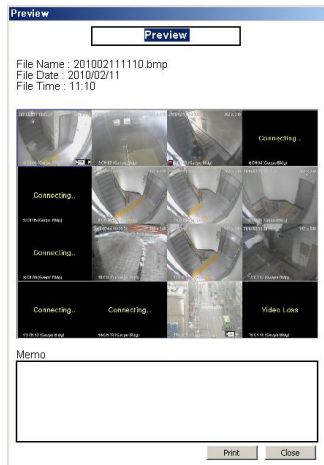
Other functions include real-time monitoring screen capture, printing of the captured image, real-time image recording and full screen.



1. Press  button and it saves the real-time monitoring screen as a file and brings the image editor 'Picture Viewer'. This editor allows users to edit images by using the color adjustment and filter. (In 5.2.3 App Setup -> Storage tab, a saving folder is shown.)



2. Press  button and it starts to record the real-time monitoring screen and audio together. The saved file can be played through 'File Player'.
3. Press  button and it changes to the full screen. Press 'ESC' key for return.
4. Press  button. A captured image file list is shown and selecting one of them leads to the image in the reporting format document. Press the 'Print' button.



6.7 Callback function

At certain events at DVR, you can be alarmed by VMS through the connection of the port and IP set at VMS. Event List(basic), Popup Text(basic), Popup Image, Instant Live, Alarm List can be used for the Alarm to users.

6.7.1 Setting and operation

1. Callback Port setting

At VMS Menu > System > App Setup > Callback tab, you can set the port for callback receiving as below. (Default Callback port : 9000)

2. Callback Alarm Setting

Basically, Popup Text and Event List will be appeared for the attention at Callback Event. Additional Alarms such as Popup Image, Instant Live, Alarm Out List can be set at VMS Menu > Setup > Alarm Manager.

3. Callback Alarm Operation

After Callback Alarm setting above, you can check Callback Event at real time.

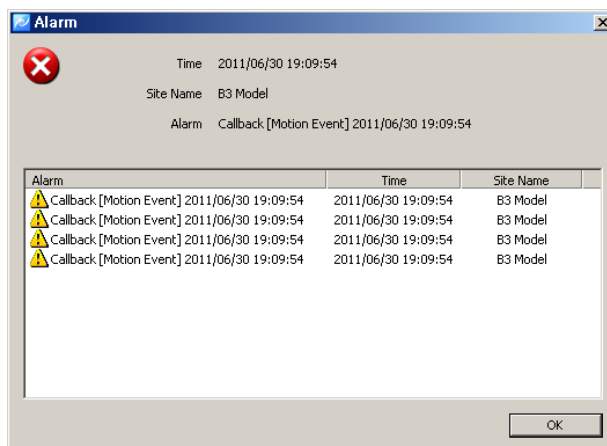
- Event List (Basic)

Event	Site	CH	Site Time	PC Time
Motion Event Stop	B3 Model	15	2011/06/30 19:06:46	2011/06/30 19:08:07
Motion Event	B3 Model	3	2011/06/30 19:06:52	2011/06/30 19:08:13
[Callback] Motion Event	B3 Model	3	2011/06/30 19:06:52	2011/06/30 19:08:13
Motion Event	B3 Model	15	2011/06/30 19:06:57	2011/06/30 19:08:19
[Callback] Motion Event	B3 Model	15	2011/06/30 19:06:57	2011/06/30 19:08:19
Motion Event	B3 Model	5	2011/06/30 19:07:04	2011/06/30 19:08:25
[Callback] Motion Event	B3 Model	5	2011/06/30 19:07:04	2011/06/30 19:08:25
[Callback] Motion Event	B3 Model	8	2011/06/30 19:07:04	2011/06/30 19:08:25
Motion Event	B3 Model	8	2011/06/30 19:07:04	2011/06/30 19:08:25

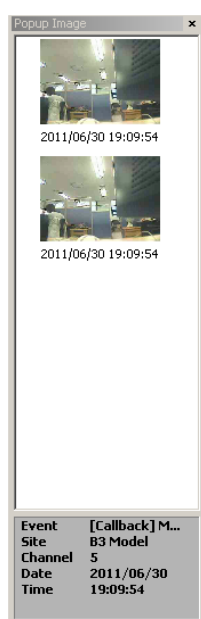
- Popup Text (Basic)



- Alarm Out Box



- Popup Image



- Instant Live





7. Playback

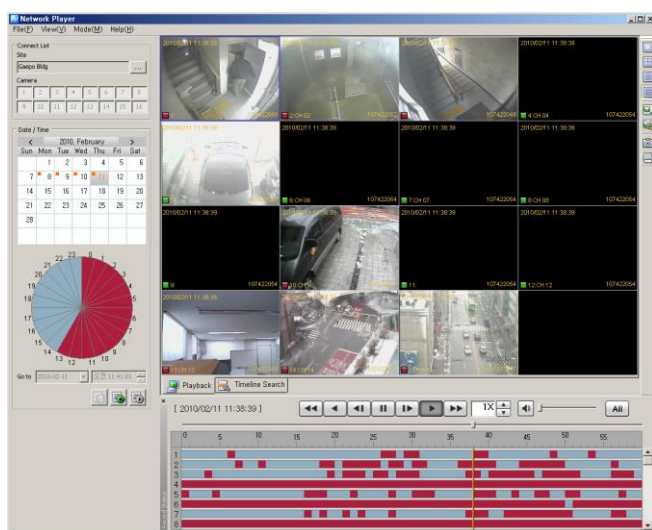
7.1 Playback overview

Playback allows users to search and playback recorded images and audios of the security device in multi-channel from distant PC.

Users can use a preview search to find recorded images and audios. Searching and thumbnails by a second term are available. Users can download images and audios of the desired time period into PC.

7.1.1 Playback of the Recorded Image

1. Select  icon in Tool Bar.
2. Setup searching conditions (Camera/Security device, Date/Time) in the searching panel of the player at top left.
3. Designate a desired time to be played in 'Go to' and press  (start) button.





Note ■ The player can display recorded images of max. 16 cameras at the same time. (One security device)

7.2 Search

Users can search recorded images and audios in the security device by two means; the time line search and POS search.

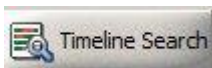
The time search is to designate a certain date/time and bring images appertaining to the designated date/time.

The POS search is to select a certain date and hour. A time line between 0minute 0second ~ 59minutes 59seconds shows up. Users can view thumbnail images by 1 second term.



Note ■ The way of the search in the player may be different from the way in the security device.

7.2.1 Time line Search



1. Select icon in Tool Bar.
2. Select a security device to be played from 'Connect List' at the top-left.
3. Select a date and time to be searched.



Note ■ Users can select max. 16 cameras.

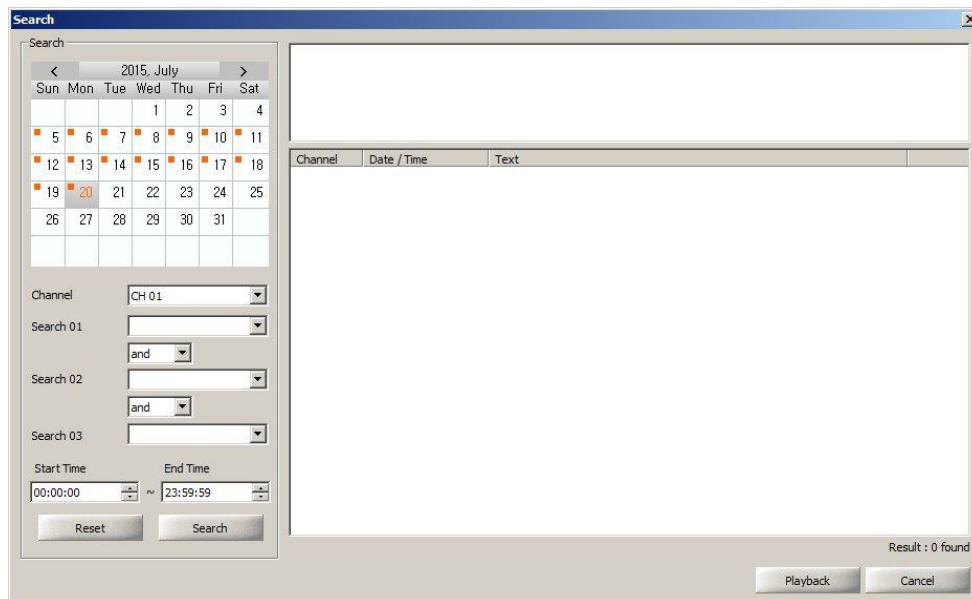
7.2.2 POS Search





1. Select icon in Tool Bar.
2. Select a security device to be played from 'Connect List' at the top-left.
3. Select a date and time to be searched and press button.
4. Setup a desired time to be searched at 'Go to', bottom-left and press button.

The time line of the preview search is shown.

5. As the time bar moves by one second term in the preview search, the preview thumbnail changes accordingly.



6. 'To re-setup preview search conditions, press  default button.

 **Note** ■ Users can select max. 16 cameras.

7.3 Playback

7.3.1 Playback Overview

After searching images and audios by two means, searched images and audios are played automatically if the user presses a playback button. The channel mode is automatically determined according to the number of cameras.

In the playback screen, the channel title, date/time and other information are displayed. Also, rectangular boxes with event colors are displayed at the bottom-left.

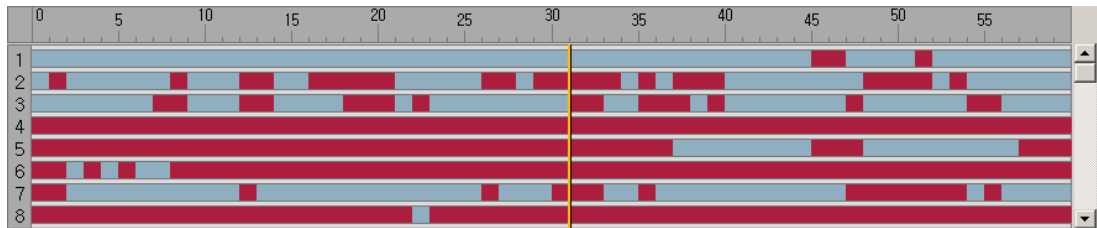
Multi-channels are played in the division mode. Double-clicking on a certain channel leads to the full screen. For return, double-click on the full screen.

In the time line, image information (recording event status) being played is indicated in

color. Users can move the bar and play at a desired location and also the snapshot and printing are available.

7.3.2 Time Line

Time Line indicates images and audios of the designated search condition and events by each channel in graphic lines.



The green line indicates that a recorded data exists. The red line means that an event recording data exists. The green space is that there is no data. Using a scroll at right, users can check the recorded event data from channel 1 to 16.

7.3.3 Playback Control

It indicates images and audios of the designated search condition and events by each channel in graphic lines.






Button	Function	Remark
	Fast Reverse	
	Reverse Play	
	Reverse one frame	
	Pause	
	Play one frame	
	Play forward	
	Fast Forward	
	Play Speed Adjustment	
	button for speed up, button for slow down.	
	Indication by events in the time line	



Caution ■ Some of the security devices may not be supported with all functions.

7.3.4 Control

In Player, users can use a channel mode change, full screen, zoom function, capture and print function.

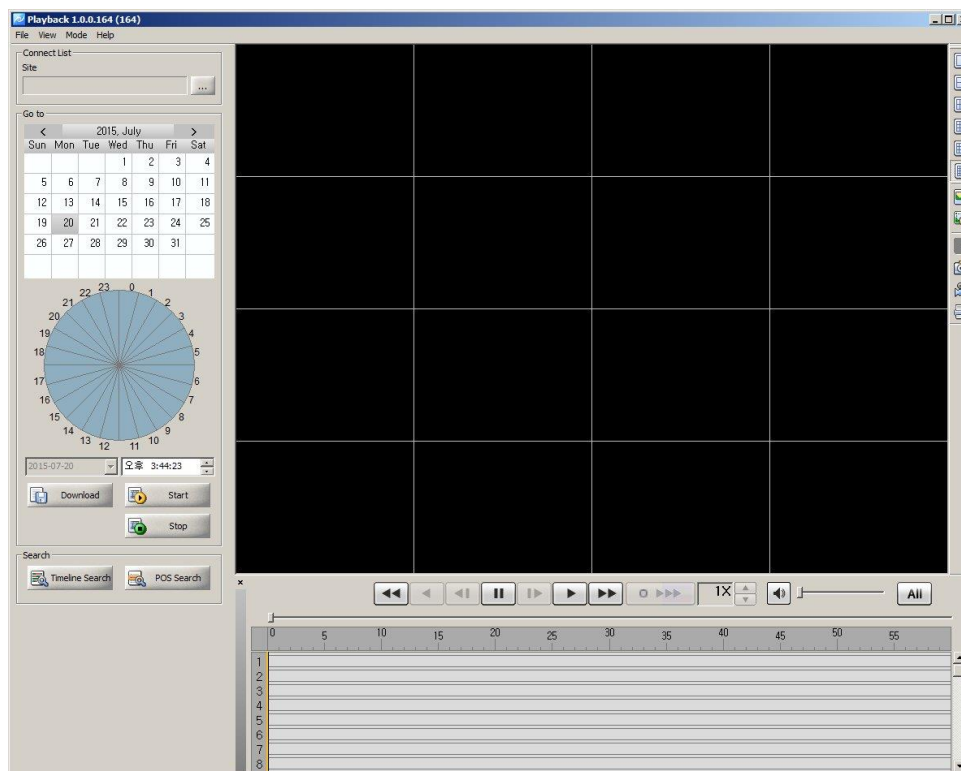
Button	Function	Remark
	Playback in 1, 4, 9, 16 channel mode	
	Full Screen	
	Image Enlargement (100%, 150%, 200%, 300%, 500%, 700%, 1000%, 1600%)	
	Screen Capture	
	Screen Print	

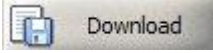
7.4 Download

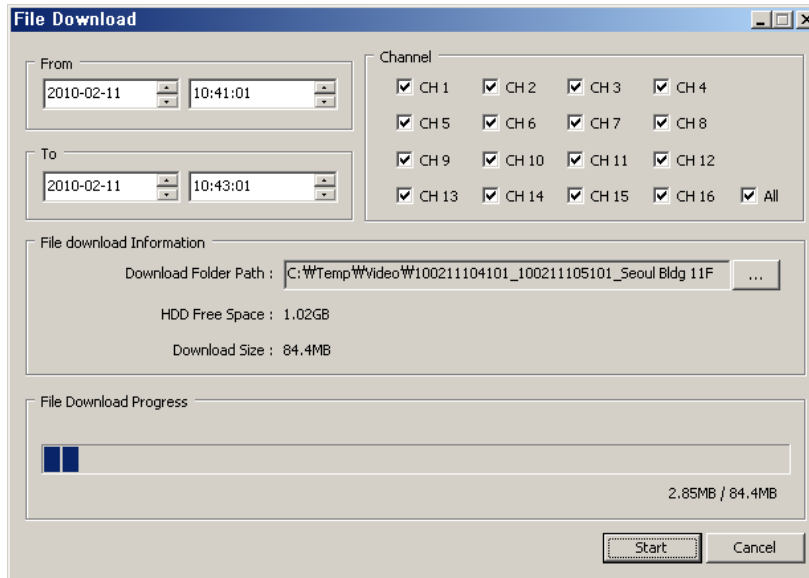
In Download, users can download and save recorded images and audios from the security device to PC.

7.4.1 Download of the Recorded Data

1. Select Network Player[] in Tool Bar. The playback window will show up.



2. Select a security device to be played from 'Connect List' at the top-left.
3. Press  button and the download window pops up.
4. In the download window, setup a start date/time and end date/time, and then tick on desired channels and designate a saving route.
5. Press 'Start' button to initiate downloading.



Note

- The download data is saved as a folder and the folder name is "start date/time_end date/time".




8. Backup Player

8.1 Backup Player Overview

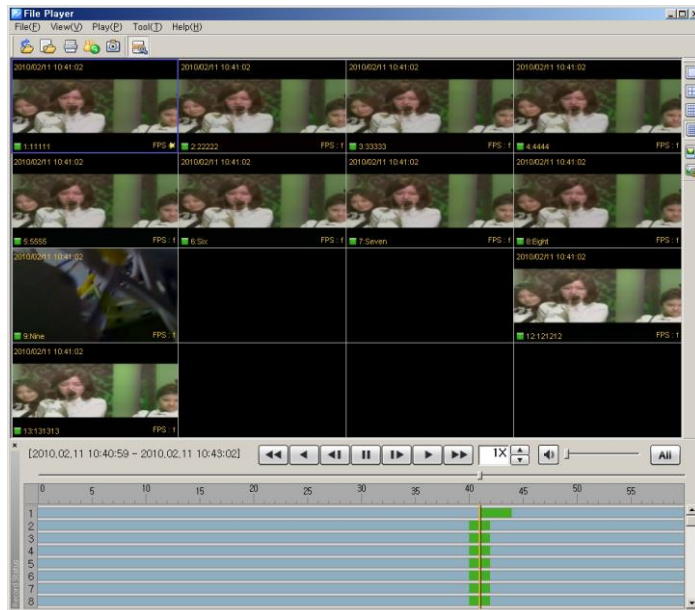
Backup Player is to search and play a downloaded image/audio file in the PC in multi-channel screen.

Smart Search enables users to find the designated time by searching the thumbnails when the motion detected.

8.1.1 Playback of the Recorded Data

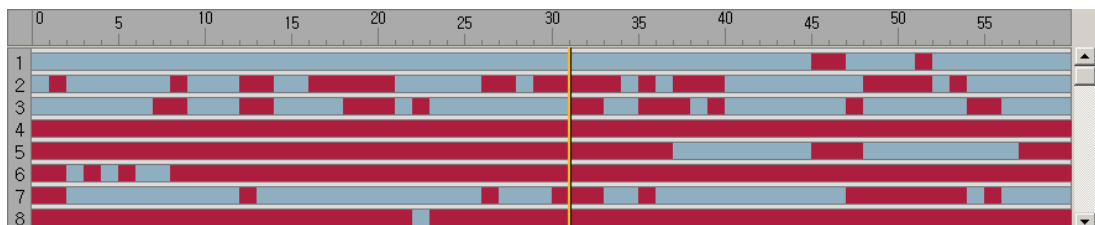
1. Select  icon in Tool Bar.
2. In Tool Bar, select a data folder by pressing  or  button. (In 'File' menu, users can select 'Folder Open' or 'File Open'.)

3. It starts playing recorded data files.



8.1.2 Time Line

Time Line indicates images and audios of the designated search condition and events by each channel in graphic lines.





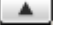




The green line indicates that a recorded data exists. The red line means that an event recording data exists. The green space is that there is no data. Using a scroll at right, users can check the data of the recorded events from channel 1 to 16.

8.1.3 Playback Control

It indicates images and audios of the designated search condition and events by each channel in graphic lines.

Button	Function	Remark
	Fast Reverse	
	Reverse Play	
	Reverse one frame	
	Pause	
	Play one frame	







	Play forward	
	Fast Forward	
	Play Speed Adjustment	
	 button for speed up,  button for slow down.	
	Indication by events in the time line	



Caution ■ Some of the security devices may not be supported with all functions.

8.1.4 Control


In Player, users can use a channel mode change, full screen, zoom function, capture and print function.

Button	Function	Remark
	Playback in 1, 4, 9, 16 channel mode	
	Full Screen	
	Image Enlargement (100%, 150%, 200%, 300%, 500%, 700%, 1000%, 1600%)	
	Screen Capture	
	Real time recording	
	Screen Print	

8.2 Smart Search

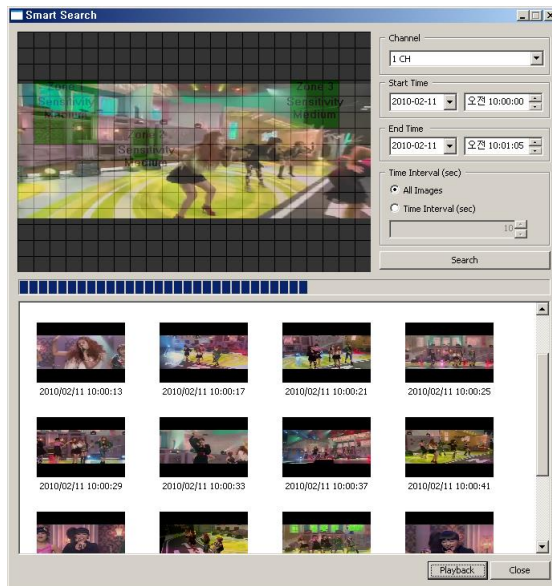
Smart Search is to search a motion in the specific area of the recorded image data. Searched images are saved as thumbnail images in time sequence.

8.2.1 Smart Search

1. Select  button in Tool Bar. (Select 'Smart Search' in 'Tool' menu)
2. Setup a desired area to be motion-searched.



3. Select a desired channel to be smart-searched, start date/time and end date/time.
4. In Time Interval, select 'All Images' or 'Time Interval (sec)'.
5. Press 'Search' button and it starts smart-searching




6. Select searched thumbnail images and press 'Playback'. It starts the playback from the selected time period.

8.3 Water Mark Search

Searched data (thumbnail image format) will be listed for the storage.

8.3.1 Water Mark Search

1. Select  button at program toolbar. (At 'Tool' menu, select 'Water Mark search')
2. After selection of the channel, press Water Mark search button. Then Water mark search will be started.



3. At the selection of searched thumbnail image, you can play the file by pressing 'Playback' button.

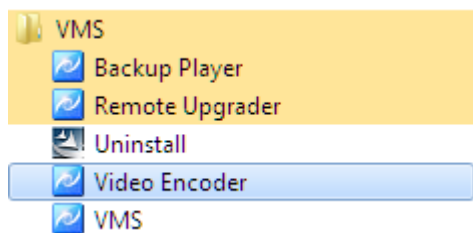
9. Video Encoder

9.1 Video Encoder Overview

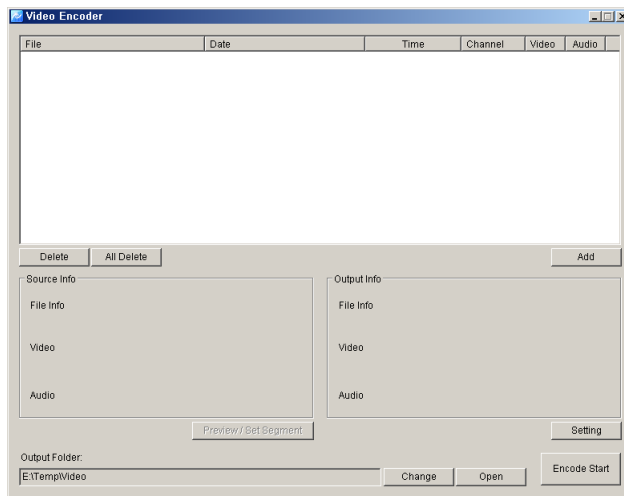
By Video Encoder, downloaded file of MPEG4 or H.264 formatted can be transformed into MPEG1 or AVI format by which the recorded file can be played at Windows Media Player.

9.2 Video Encoder Start/ Operation

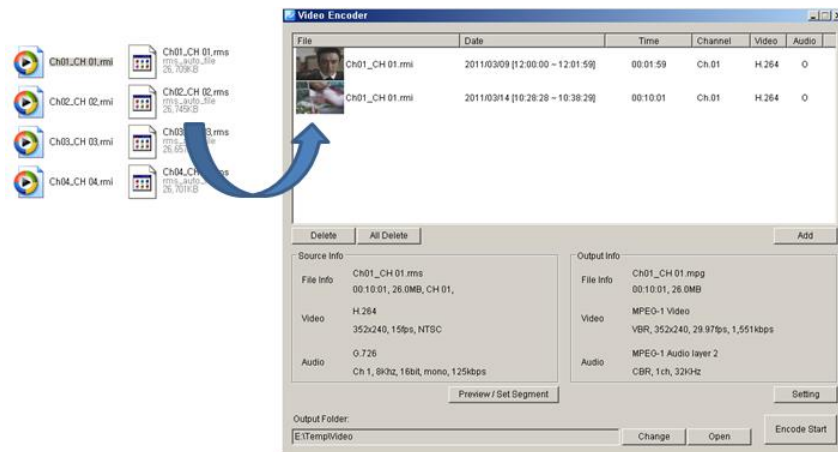
1. Go to [Start] > [Program] > [VMS] and click the [Video Encoder].



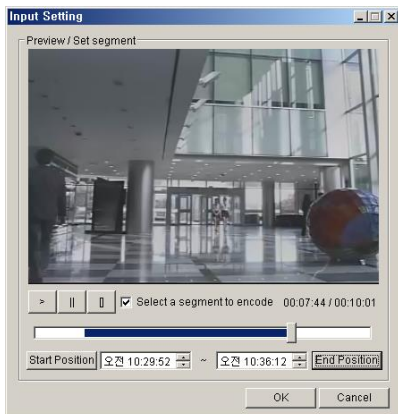
2. Video Encoder execution.



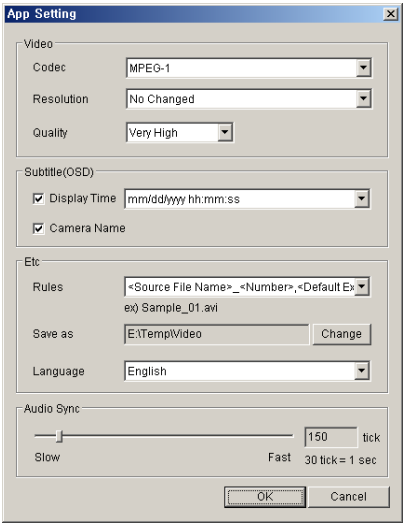
3. By Add button or dragging the files or folder, downloaded and recorded files can be added to the encoding list.



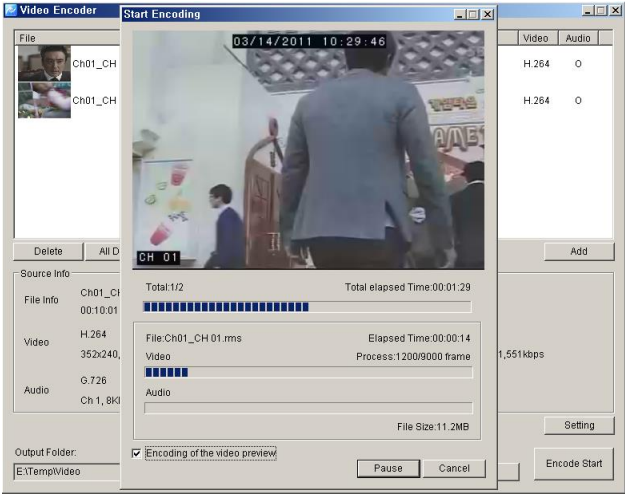
4. By selection of 'Preview / Set Segment', the time to be encoded will be set.



5. On Click of ‘Setting’, Video Codec, Resolution, Quality, Date Type, Audio Sync of the selected data will be set.



6. After set of Output file path, press ‘Start’ button for the transformation.




10. Health Manager

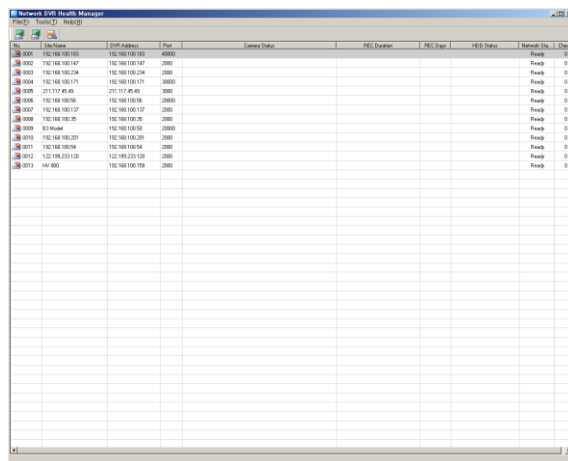
10.1 Health Manager Overview


By Health Manager, users can monitor the status of the remoted devices such as connection, camera information, recording information, recording status, network status. The current results monitored can be backed up by *.csv format.

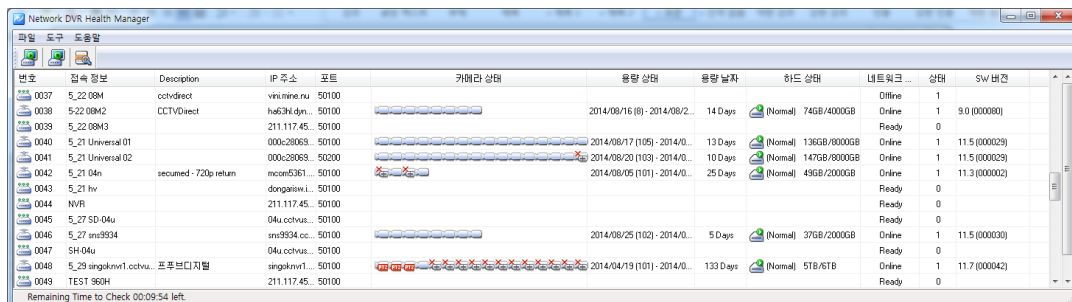
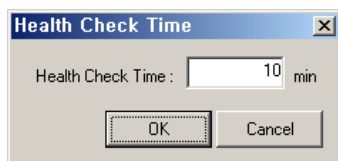
10.2 Health Manager Start/ Operation

1. Select  icon at program toolbar.
2. Health Manager will be executed.

(The list of the DVR registered at VMS address will be displayed orderly)



3. Select  button at program toolbar.
4. User can configure the Check time interval



5. At menu > File > Export, the current data monitored will be save by *.csv format (Excel format compatible)

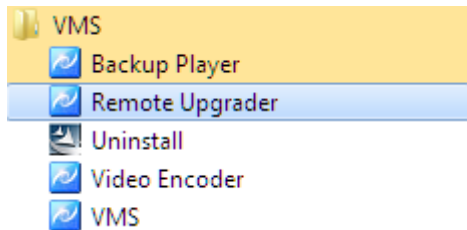
11. Remote Upgrader

11.1 Remote Upgrader Overview

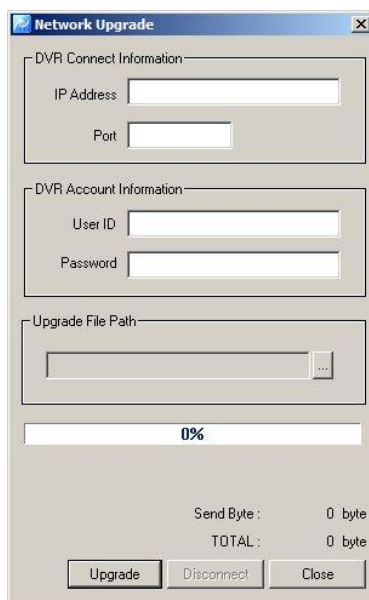
By Remote Upgrader, security device will be simply updated with F/W through PC remotely.

11.2 Remote Upgrader Start/Operation

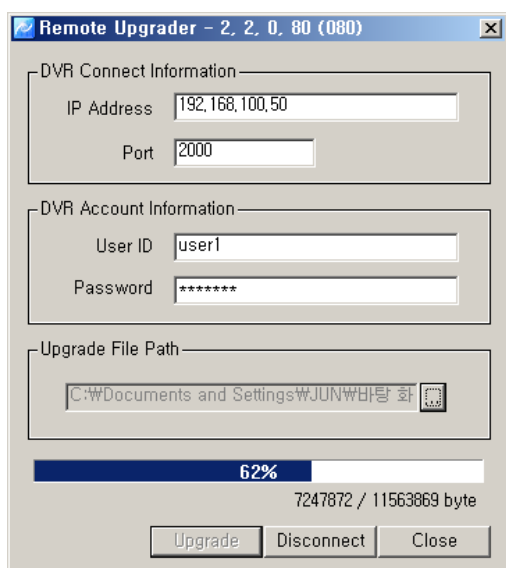
1. Start > Program> VMS > Remote Upgrader.



2. Remote Upgrader execution as below.



3. Input the IP Address, Port, UserID, Password of the remote device for F/W update, then select the upgrade file(*.bin).
4. Click the 'Upgrade' then the upgrade file will be transferred to the remote device.



5. After the transfer finished, automatic upgrade will be done at the Security device.



Caution


- Without Hard Disk mounted at the Security device, the remote upgrade function might not be supported.

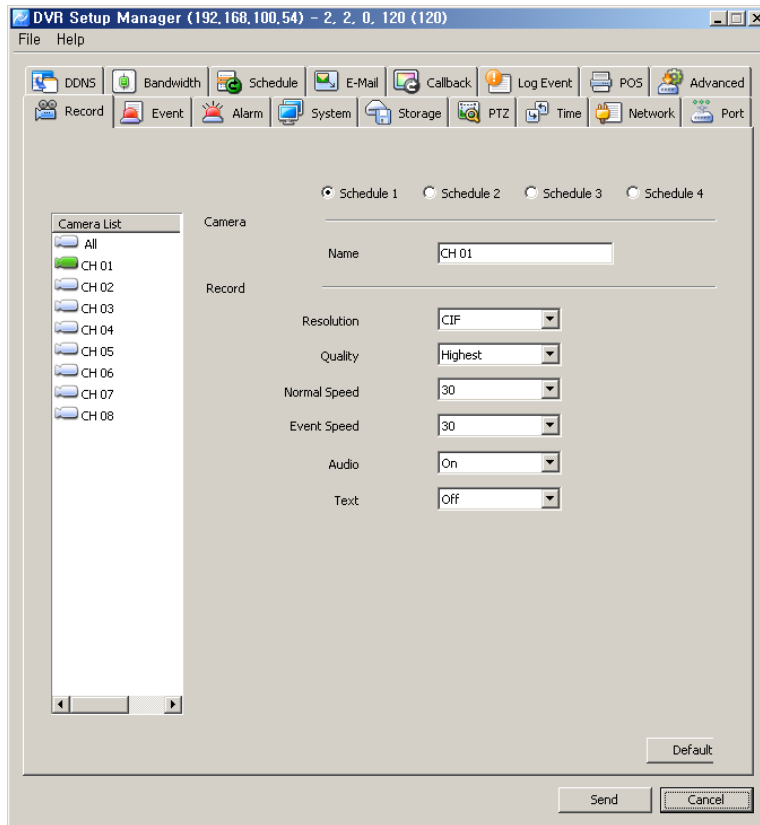
12. DVR Setup Manager

12.1 DVR Setup Manager Overview

By DVR Setup Manager, DVR setup will be available from the remote PC. The setup data can be applied to other DVRs and adjusted at the file format.

12.2 DVR Setup Manager Start

1. Select  button at the program toolbar.
2. Setup data of the security can be changed by DVR setup manager.
3. The changed setup data will be transferred to the security device by pressing 'Send' button.



12.3 Setup Data Open & Save

1. At 'File' menu, select Open > setup data.
2. After change of the setup data, save the setup data by the selection of 'save' at 'file' menu.
3. The changed setup data can be transferred to security device by pressing 'Send' button then the setup data will be applied at the security device.

12.4 Setup Data Reset and DVR ALL Reset

1. 'At file menu, all setup data can be reset by selection of 'Setup Data Reset'.
2. 'At file menu all setup of DVR will be reset by selection of 'DVR All Reset'.
3. Changed setup data will be applied at DVR by pressing 'Send' button.



Caution

- By 'DVR All Reset', the security device will be set as factory default. By this, remote access will not be available from the change.